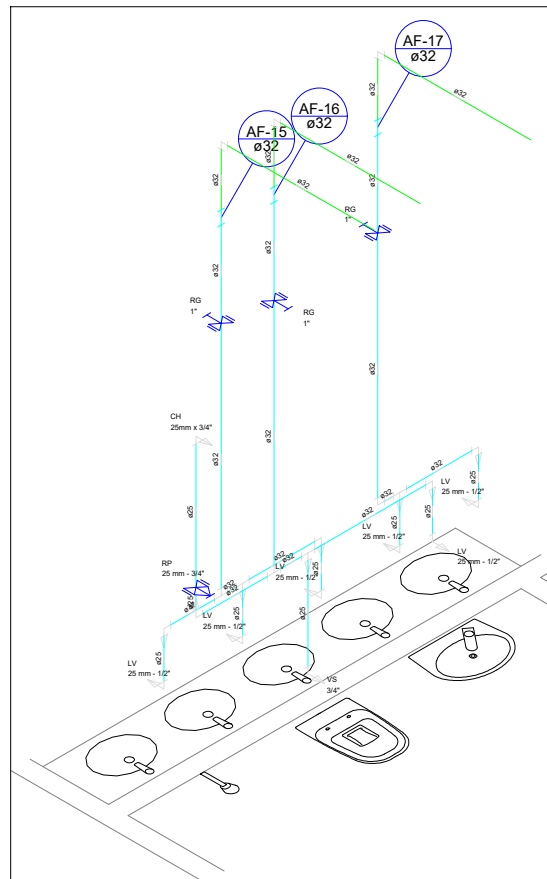
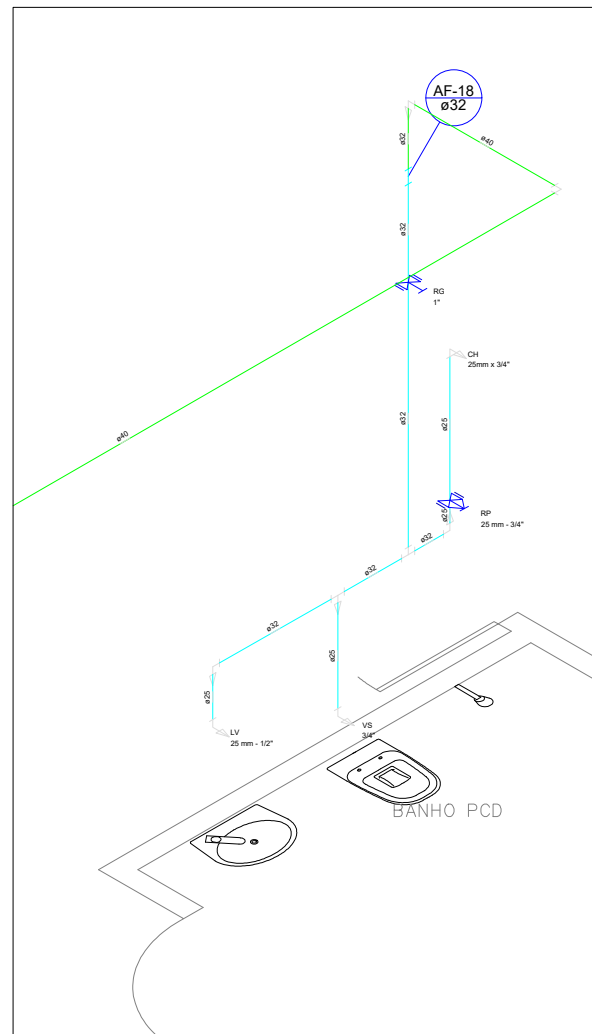


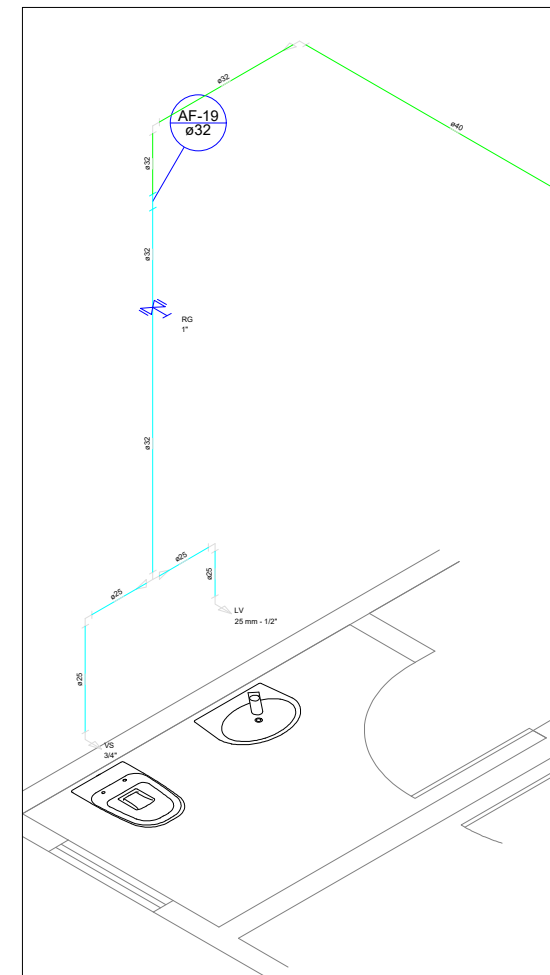
Detalhe H5



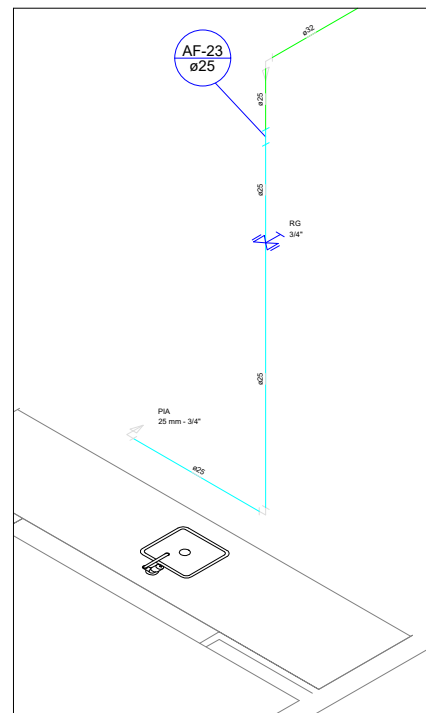
Detalhe H6



Detalhe H7



Detalhe H8



Detalhe H9



PREFEITURA MUNICIPAL DE VÁRZEA GRANDE

Av. Castelo Branco, Espaço Municipal, 2500 – Centro Sul, Várzea Grande/MT
CEP 78125-700 – Fone/Fax: 65 3688 8000

PROJETO:

CRECHE DO IDOSO

LOCALIZAÇÃO:

Avenida Presidente Arthur Bernardes s/n
Bairro: Ipase – Várzea Grande – MT

ASSUNTO:

DETALHE ISOMETRICO H5/9

AUTORES DO PROJETO:

AUREO EMANOEL DA SILVA
CREA: MT042435

DATA:

11/12/2019

ESCALA:

1/50

FOLHA N°

09/10